

# Tusk License Plate Bracket

Part Number: 2025640002

Thanks for your purchase of the Tusk License Plate Bracket. Please take note that this is a semi-universal license bracket and is meant to fit a variety of applications. The mounting methods shown in the examples of these instructions may be used on various machines. Adhere to the information and instructions below to get the most out of your Tusk License Plate Bracket.

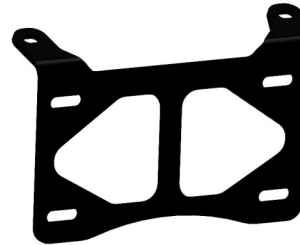


**Assembly:** *Before you throw any packaging away, make sure you received all the necessary*

INSTALLATION INSTRUCTIONS AND INFORMATION

### Hardware:

License Plate Bracket	(1)
M6x1.0x20mm hex head bolt	(2)
M6x1.0x16mm hex head bolt	(4)
M6 flat washer	(2)
M6 nyloc nut	(6)



(1) License Plate bracket



(2) M6x1.0x20mm hex head bolt

### Installation Examples:

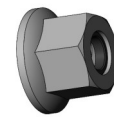
Polaris Pro R	PG 1
Polaris Pro XP/Turbo R	PG 2
Kawasaki KRX/KRX4	PG 3



(4) M6x1.0x16mm hex head bolt



(2) M6 flat washer



(6) M6 Nyloc nut

### Polaris Pro R installation:

1. Hold the license plate bracket up to the rear facia under the exhaust as shown. **(FIG 1)**
2. Center the bracket on the rear facia and mark the two top holes. **(FIG 2)**
3. Drill the two marked holes with a 1/4" drill bit. **(FIG 3)**

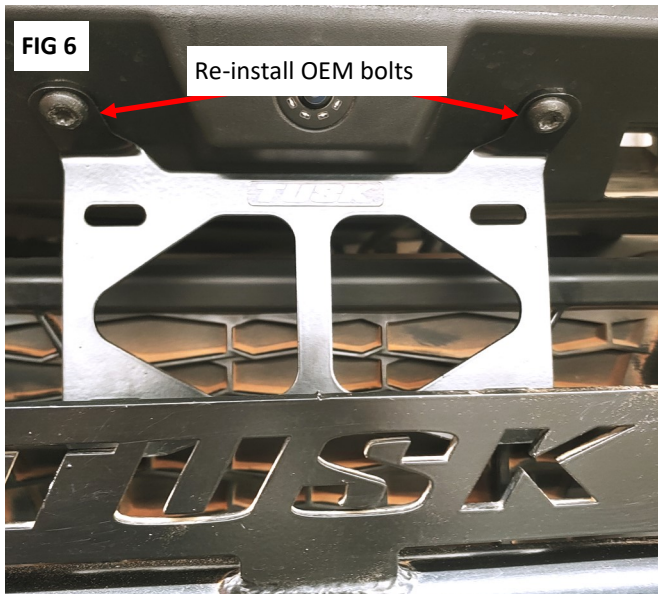
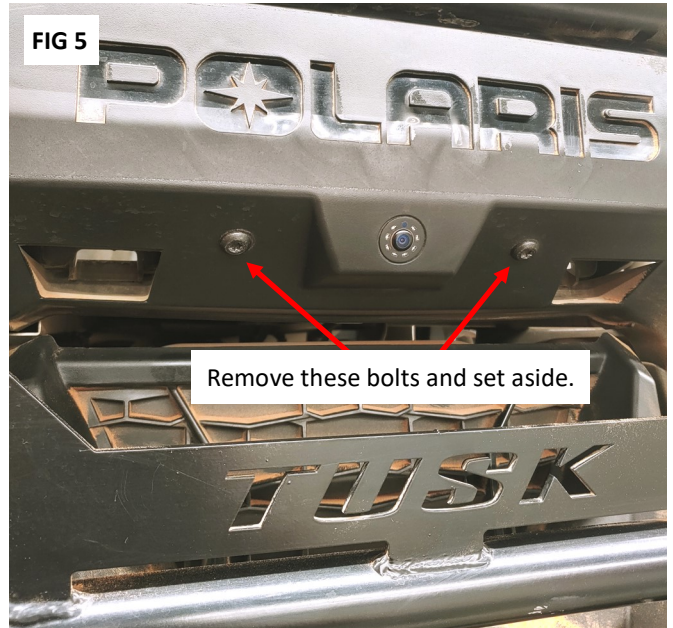


4. Install both M6x1.0x20mm hex head bolts through the bracket and rear facia. Use an M6 flat washer and nyloc nut on the back side for each bolt. (FIG 4)
5. The 4 M6x1.0x16mm bolts and nyloc nuts are for installing the license plate to the frame.

**Polaris Pro XP/ Turbo R:**

1. Remove the 2 bolts in the rear facia on either side of the back up camera hole. (FIG 5) You will be re-installing these in the next step.
2. Line up the license plate bracket with the holes in the facia and re-install the factory bolts. (FIG 6)
4. The 4 M6x1.0x16mm bolts and nyloc nuts are for installing the license plate to the frame.

**\*\*\*You will not need the M6x1.0x20mm bolts and will have 2 washers and 2 nyloc nuts left over\*\*\***

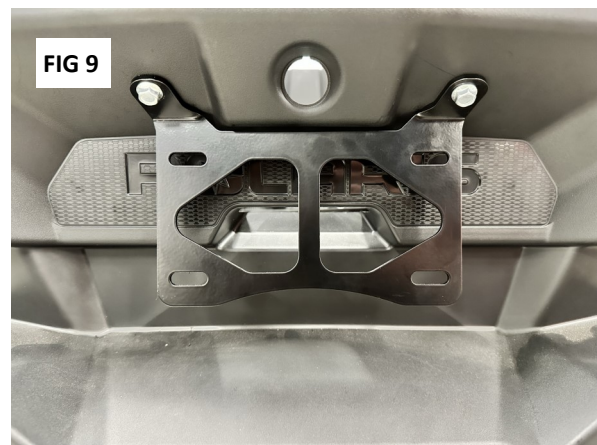
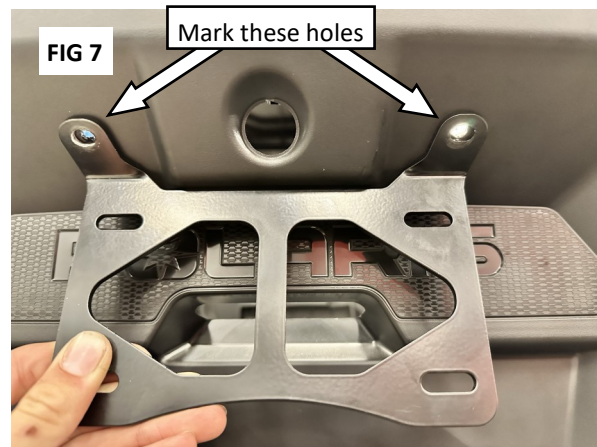


Enjoy the use of your new Tusk License Plate Bracket!



## Polaris XP 1000:

1. Line up the license plate bracket as shown. **(Fig 7)**
2. Ensure there is enough room behind the bracket to install the license plate hardware.
3. Mark the mounting hole location. **(Fig 7)**
4. Drill out the two marked holes with a 1/4" drill bit. **(Fig 8)**
5. Install both M6x1.0x20mm hex head bolts through the bracket and rear facia. Use an M6 flat washer and nyloc nut on the back side for each bolt. **(FIG 9)**
6. The 4 M6x1.0x16mm bolts and nyloc nuts are for installing the license plate to the frame.



## Kawasaki KRX/KRX4:

1. Hold the license plate bracket up to the rear facia under the Kawasaki logo as shown. **(FIG 7)**
2. Center the bracket on the rear facia and mark the two top holes. **(FIG 7)**
3. Drill the two marked holes with a 1/4" drill bit. **(FIG 8)**
4. Install both M6x1.0x20mm hex head bolts through the bracket and rear facia. Use an M6 flat washer and nyloc nut on the back side for each bolt. You can access the inside of the panel from either side (drivers side has the most space). **(FIG 9)**
5. The 4 M6x1.0x16mm bolts and nyloc nuts are for installing the license plate to the frame.

